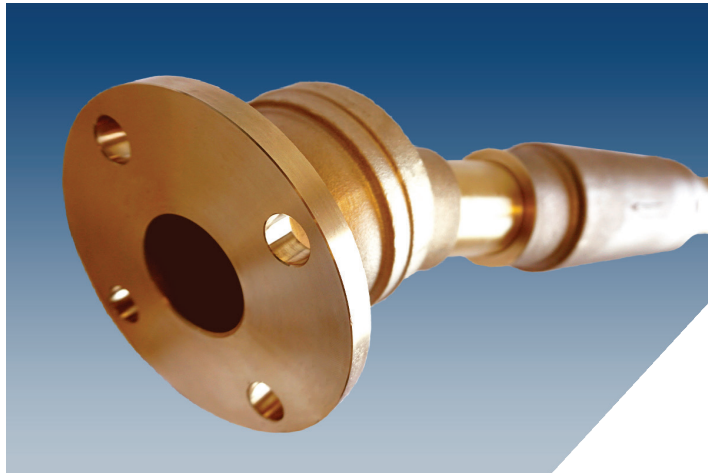


# 2 Inch Force Balanced FLEX-TEND®

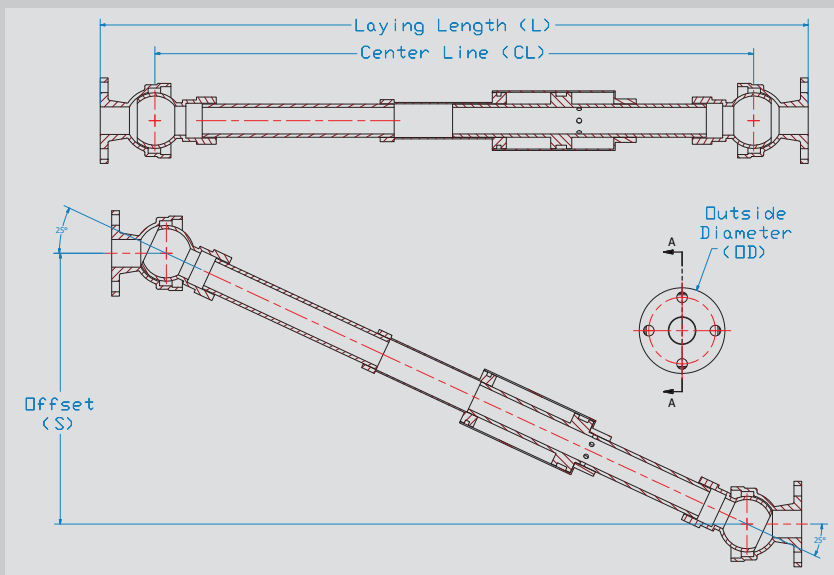
Force Balanced Flexible Expansion Joint



### Features and Applications:

- Size 2 inch rated at 150 PSI
- For Ductile Iron, Steel, PVC or HDPE pipe
- Expansion unit will NOT impart a thrust force while under internal pressure
- Designed to give Deflection and or Expansion/Contraction needs to protect pipeline systems from shear. Refer to submittal drawings for "offset" capability
- Constructed of Bronze / Stainless Steel
- Up to 20° Deflection per ball
- Each unit tested to 150psi rated working pressure prior to shipment
- Due to the design of the seals, no periodic maintenance is required
- Flange outlets conform to the dimensional requirements of ANSI/AWWA C110/A21.10 (class 150), ANSI BIC.5, class 150
- NOT for use on pipelines containing solids and debris.
- Product of Japan

### FLEX-TEND Force Balanced Submittal Drawing



For use on water pipelines subject to hydrostatic pressure and tested in accordance with either AWWA C600, C605, or ASTM D2774.

### Flange by Flange

Nominal Pipe Size	OD	D*	E**	CL	S	Series Number	L	Weight (lbs)
2	6.20	25°	6.5	44.7	19.7	4402F20B	50.5 (±3)	48.4

NOTE: Dimensions are in inches, and are subject to change without notice.

\*Deflection Angle is per ball.

\*\*Maximum expansion.

**EBA Iron Sales, Inc.**

P.O. Box 857, Eastland, TX 76448

Tel: (254) 629-1731

Fax: (254) 629-8931

(800) 433-1716 within US and Canada

contact@ebaa.com

www.ebaa.com